



Resource Handbook

"4 Reasons to get Four Seasons: Leaves, Birds, Pests & Safety"

Unit 6 / 3 Haliday Place, East Tamaki, Auckland, 2016

0800 700 532

sales@fsgp.co.nz

2003

Four Seasons
Gutter Protection
Australia was
formed

2004

Four Seasons
invests in 60 tonne
press to
manufacture roof
clips to suit various
roofs.

2005

Purchased new
warehouse and
office space based
in Bayswater.

2009

Maxi Aluminium
Mesh lauched - Fire
Rated "0" with the
epoxy resin coating
preventing fading
in the short term of
its life.

2008

Specifically
engineered roller
former to
manufacture trims
of various lengths
and colours - to suit
every roof.

2007

Received an award
for excellence in
design and
innovation, the first
company within
our industry.

2010

First National
company to be
registered with
Australian Made.

2011

Deck clip launched
- high tensile steel
ensuring the roof
clip is easy to fit
and locks the mesh
securely to roof
ridges.

2012

Four Seasons
Gutter Protection
New Zealand opens
its doors in Waiuku.

Our History

2021

Four Seasons
Gutter Protection
New Zealand
relocates to East
Tamaki under new
ownership.

2013

Global Mesh
Services formed
specifically to
manufacture Four
Seasons approved
gutter protection.



The Manufacturer

Global Mesh Services is an Australian owned and operated company. Global Mesh Services is the leading manufacturer and supplier of commercial grade polyethylene extruded gutter protection and aluminium expanded poly-epoxy resin coated gutter protection throughout the Southern Hemisphere.

Global Mesh Services have manufacturing plants in both Melbourne and Shanghai. These manufacturing plants distribute Four Seasons Gutter Protection mesh throughout New Zealand, Australia and America.

Global Mesh Services currently have two gutter protection systems available exclusively through Four Seasons Gutter Protection NZ; The Continuous Control Flow System, and the Maxi Aluminium Mesh System.



Our Mesh

We have 4 mesh types available, so we can tailor the system to suit your environment, not make your environment suit our product. All are fitted with high grade COLORSTEEL® saddles and trims (.55 BMT) to ensure the longevity of the system. All meshes are food safe, therefore will not contaminate water supplies.

Eco Mesh

8-year guarantee

Our entry level product designed for people looking for a cheaper, short term solution. Ideal for DIYers as the mesh does not have any specific top or bottom. Designed for 100% water collection. Available in 2 COLORSTEEL® colours.



Black



Gull Grey

Colours are a representation only. Please refer to actual product sample



Multi Mesh

12-year guarantee

Similar pattern to Eco Mesh but enhanced with features found in our award-winning Continuous Control Flow mesh. Designed for 100% water collection. Available in 13 COLORSTEEL® colours.



Beige



Black



Cottage Green



Gull Grey



Heritage Red



Ironbark



Karaka



Loft



Monument



New Denim Blue



Rivergum



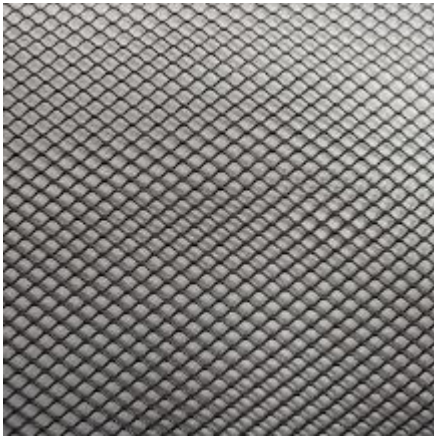
Slate Grey



Terracotta

Colours are a representation only. Please refer to actual product sample

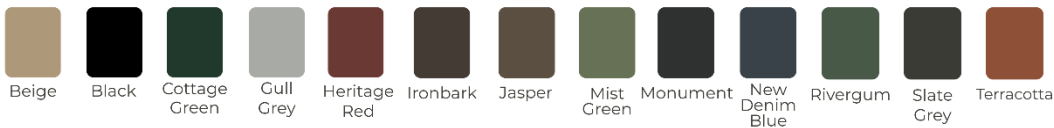




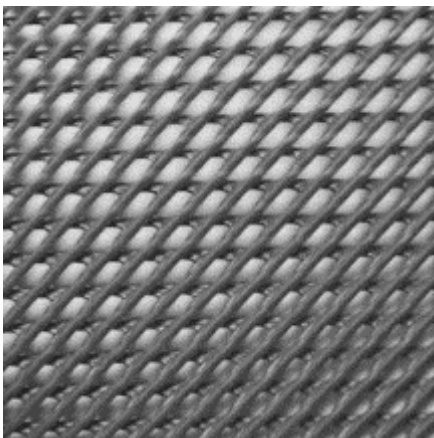
Maxi Aluminium Mesh

15-year guarantee

Expanded aluminium mesh with an epoxy resin coating that outlasts the colour fastness of powder coatings. Not suitable for use on a metal roof due to differing expansion & contraction rates. May scratch roof coating, expose bare metal and/or cause electrolysis. Available in 13 COLORSTEEL® colours.



Colours are a representation only. Please refer to actual product sample



Continuous Control Flow Mesh

20-year guarantee

Our award-winning mesh and the first mesh on the market that was designed specifically for 100% water collection. The heaviest and strongest polyethylene mesh available. Available in 17 COLORSTEEL® colours.



Colours are a representation only. Please refer to actual product sample



A System to Fit Any Roof

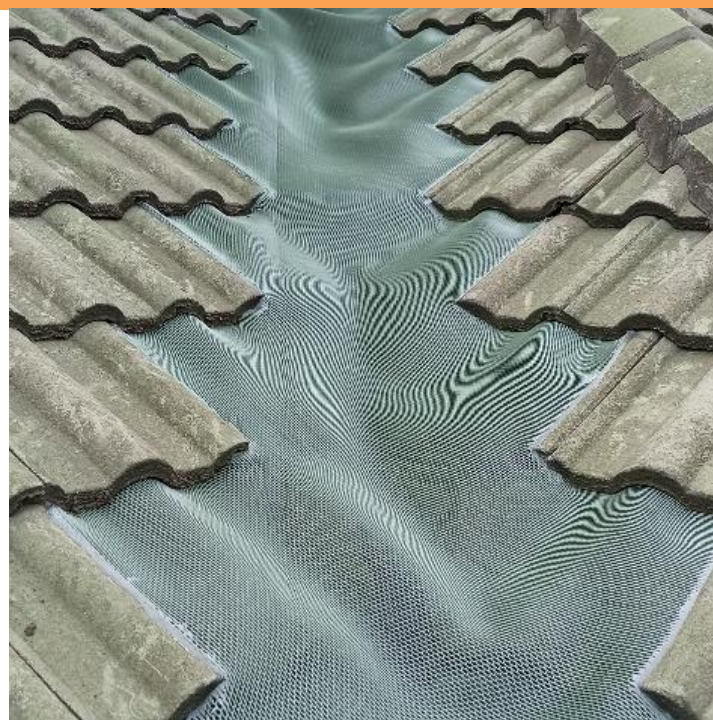
Concrete Tile

Mesh carries over the first tile and sits securely under the second. No tiles are removed while fitting



Concrete Tile Valley

Mesh is cut to match the vertical tiles and sealed on the edges – ensuring no debris can access the valleys. Typically, 750-1000mm wide



Metal Tile

Mesh carries over the first tile and sits securely under the second. No tiles are removed while fitting.



Metal Tile Valley

Mesh is cut to match the vertical tiles and sealed on the edges – ensuring no debris can access the valleys. Typically, 750-1000mm wide.



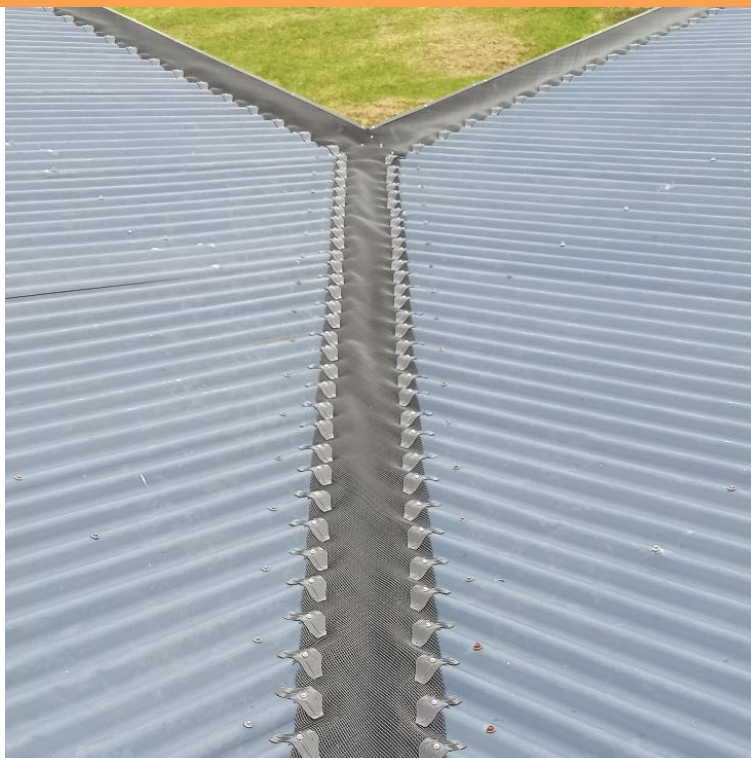
Corrugated Iron

Mesh is secured using Four Seasons COLORBOND® roof clips. Roof clips made of 0.55mm BMT high tensile steel.



Corrugated Iron Valley

Four Seasons COLORBOND® roof clips are used on both roof faces to ensure no debris can access the valleys.



Deck

Mesh is secured using Four Seasons COLORBOND® roof clips at each ridge. Roof clips made of 0.55mm BMT high tensile steel.



Deck Valley

Four Seasons COLORBOND® roof clips are used on both roof faces to ensure no debris can access the valleys.



Leaves

Our system prevents 99% of leaves and debris from entering the gutters. Reducing the chance of blockages and backflooding damage to your home or building. As well as maximising rain water collection.

Birds

Birds entering your roof cavity may cause damage that is not covered by insurance. Four Seasons has a 100% success rate in preventing birds entering your roof.

4 Reasons to get Four Seasons

Pests

Pests entering your roof cavity may cause damage that is not covered by insurance. Four Seasons has a 100% success rate in preventing pests (i.e. mice and rats) entering your roof.

Safety

ACC recorded 1,002,616 home related injury claims in 2020 alone - including those related to falling off of ladders. Our Gutter Protection system requires minimal ongoing maintenance, significantly reducing the risk your safety.



Obtaining a Quote

Every home is different, from gutters and roof types, overall structure and design. As a result, we have a number of experienced Four Seasons Sales Consultants throughout the North Island who, at no charge, will call on your home or building site to measure and assess your building.

The Four Seasons Sales Consultant will present you with a detailed, no obligation quote for New Zealand's marketing leading gutter protection. Safety equipment will be considered and discussed for the site to ensure that the fitter and home owner have a safe working environment.

Quotations can also be carried out from site plans prior to building construction.

Insurance

Four Seasons Gutter Protection NZ has a comprehensive Public Liability Insurance plan with a \$2,000,000 cover. All Installers and Consultants also carry their own Public Liability Insurance, providing our customers peace of mind that they are covered in the unlikely event of an accident.

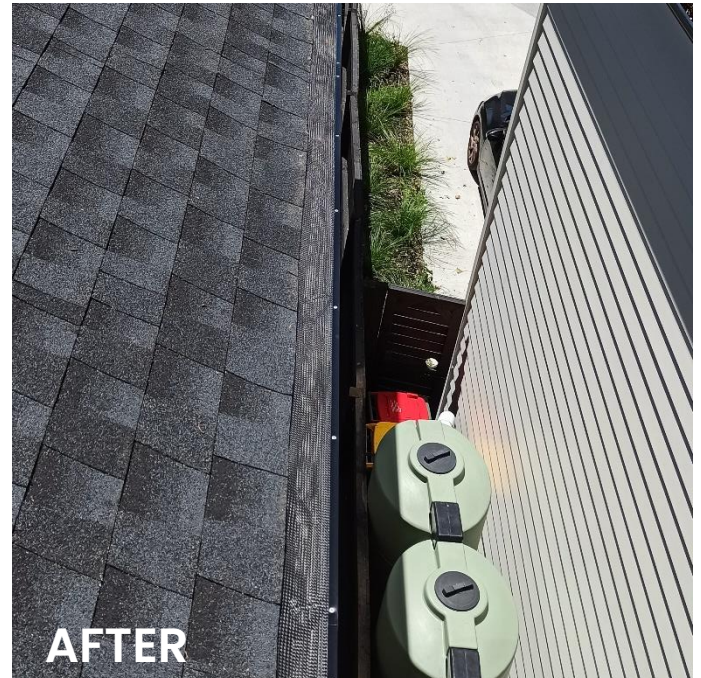
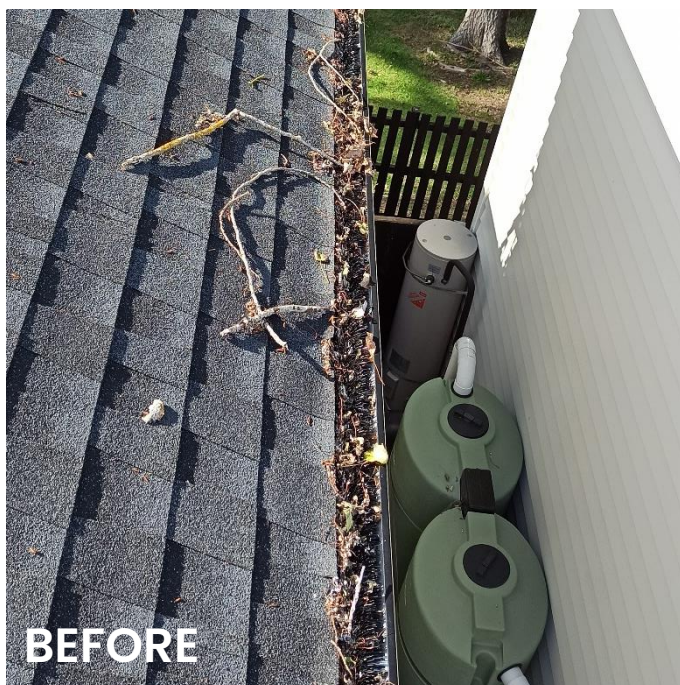
Safety Requirements

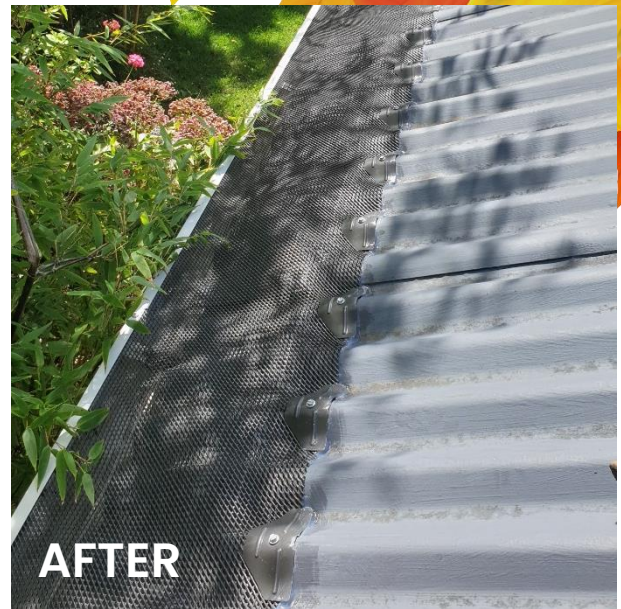
Four Seasons Gutter Protection ensures that Installers have undergone harness courses with anchor point awareness, SiteSafe training, and are First Aid trained prior to commencing employment.

Every quotation involves a safety inspection, where safety concerns are reviewed and the correct safety equipment specified prior to installers arriving on site. All work sites have a SiteSafe inspection prior to installation, and all safety requirements set down by Occupational Health & Safety will be fully complied with.



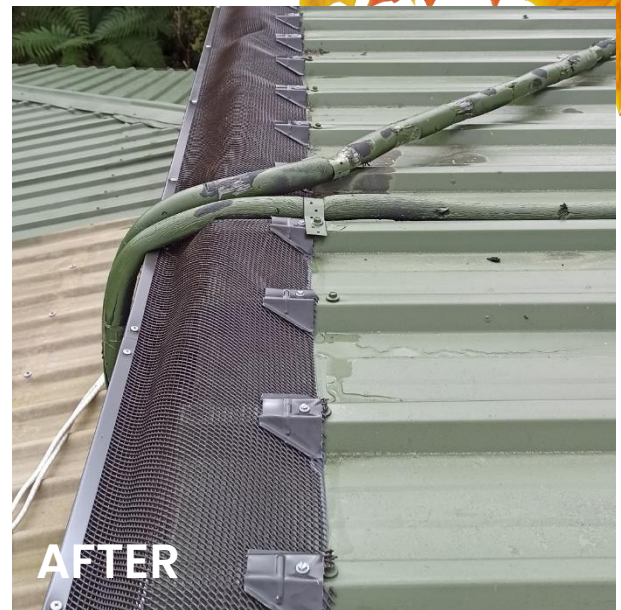
A System with Real Results



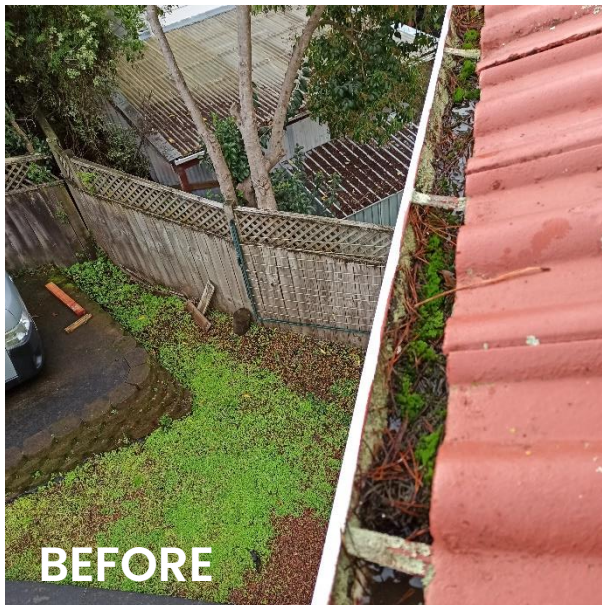




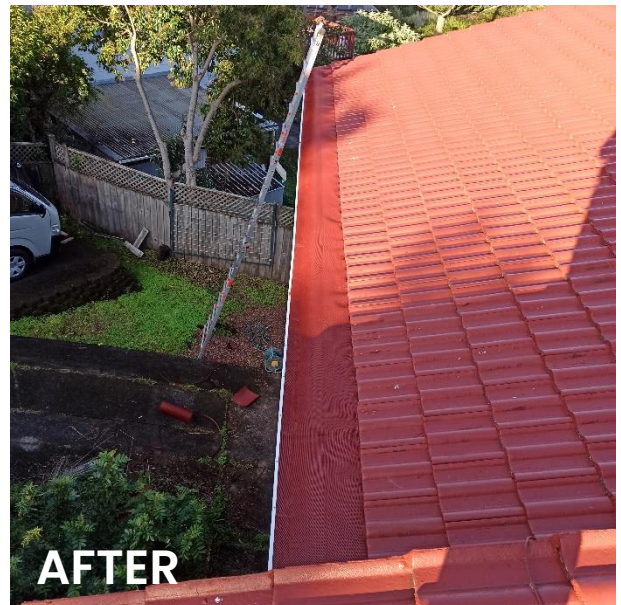
BEFORE



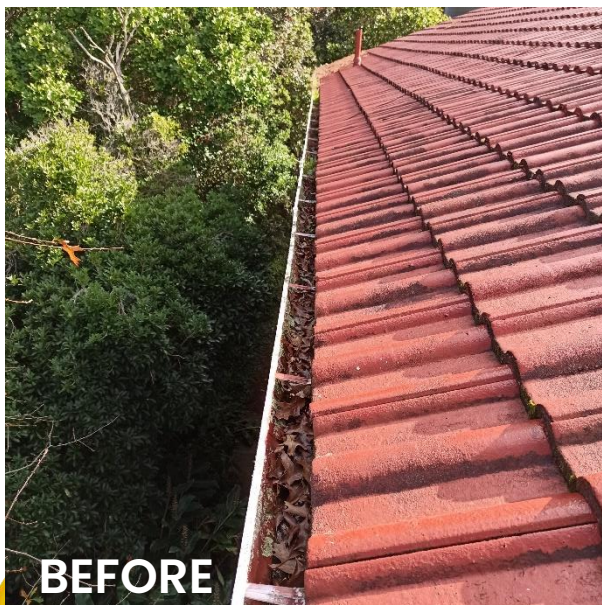
AFTER



BEFORE



AFTER



BEFORE



AFTER





Frequently Asked Questions

Do I still have to clean my gutters?

Whilst our system is designed to prevent leaf and debris build up, it is still possible for dirt, dust and fine pollen to collect in your gutters. Therefore, we recommend that you flush your gutters annually with a garden hose to maintain the integrity of the system.

What happens to the leaves on my roof after installation?

The gutter protection system is installed at a positive slope, creating an angle that facilitates leaf movement off of your guttering. It is possible for leaves to settle on the system, particularly on low pitch roofs. This may have to be maintained from time to time, and can be easily done so using our telescopic gutter wand.

How long does it take to install gutter protection in the average home?

The average home can be installed with our gutter protection system within a day. However, installation time is highly dependent on the various features of your home or building. To obtain a more accurate timeframe, we suggest a free measure and quote that is unique to your home or building.

Does the quote include GST?

All quotes include GST and the cost of safety equipment. What you are quoted is what you pay.

How will UV light impact on the gutter protection system?

Four Seasons uses the highest strength UV stabilisers available, to minimise the impact of harsh UV light. Damage to the systems integrity as a result of UV light exposure is covered in our Manufacturers Guarantee.

Won't aluminium react to my roof?

Aluminium is the only metal recommended for installation on non-metal roofs, and is secured with trims and roof clips to prevent scratching. Aluminium mesh is not recommended for installation on metal roofs.

